

Introducing In2scienceUK



In2scienceUK: Our Mission

To support disadvantaged and underrepresented young people progress to degrees and careers in science, technology, engineering and maths (STEM)



Since 2011 we have been promoting social mobility and address the lack of diversity in the STEM sector.

The Young People We Support

The young people we support are from low socio economic backgrounds:

- Are recipients of free school meals.
- Live in deprived areas.
- Have parents with no experience of higher education.

66%

receive
free school meals

83%

no family history
of higher education

77%

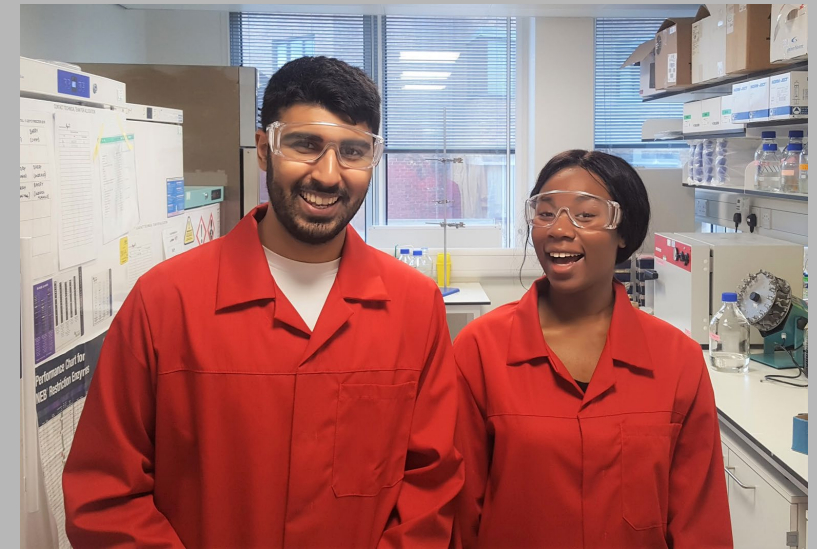
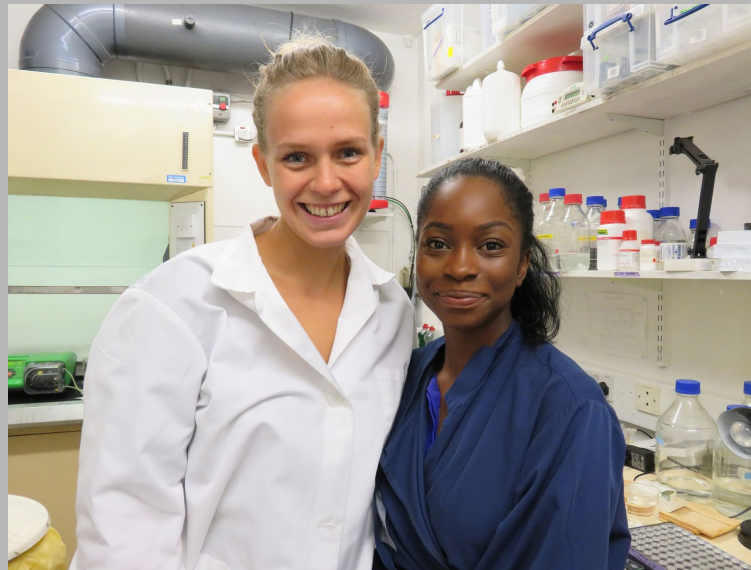
Black, Asian or other
minority ethnicity

63%

female

The In2scienceUK programme

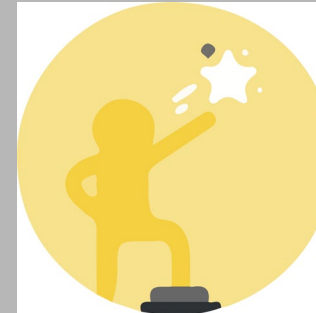
The In2scienceUK programme allows young people to work with volunteer STEM experts and take part in real research. Young people benefit from high quality professional skills workshops and skills days to support them with professional development.



Our Covid-19 Response.

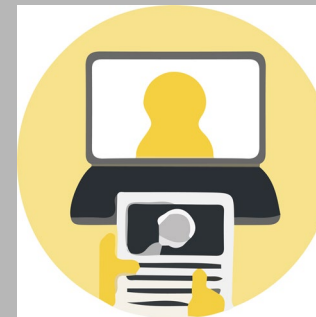
Online courses are a key aspect of the programme, alongside other activities which take place on the In2scienceUK platform.

Research focused webinars with reading, writing and investigative tasks



Online mentoring in small groups from STEM professionals and researchers

Guidance and support on university and apprenticeship applications



Employability webinars to boost professional skills and confidence

Our Impact

Only 11% of young people on free school meals progress to top tier universities, 56% of young people that complete the In2scienceUK programme progress to top tier universities and 83% onto higher education.



Queens Award 2021.

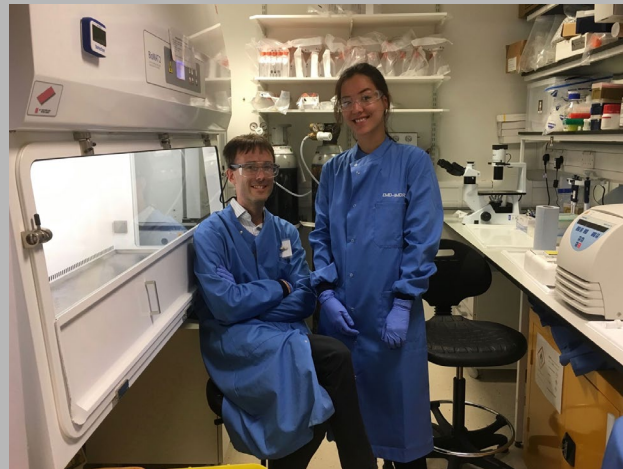
This year In2scienceUK is proud to announce that we are the recipients of The Queens Award for Enterprise for Promoting Opportunity through Social Mobility.



Support Our Mission

Every year we aim to support 100 additional young people through the In2scienceUK Programme. By increasing the number of placements and expanding the geographical area we serve we can make a lasting impact.

We can only achieve this with the support of partner organisations that aim to collaborate with In2scienceUK to advance greater diversity and inclusion in STEM.



Thank you for listening.



Website: www.in2scienceuk.org
Email: luke@in2scienceuk.org