

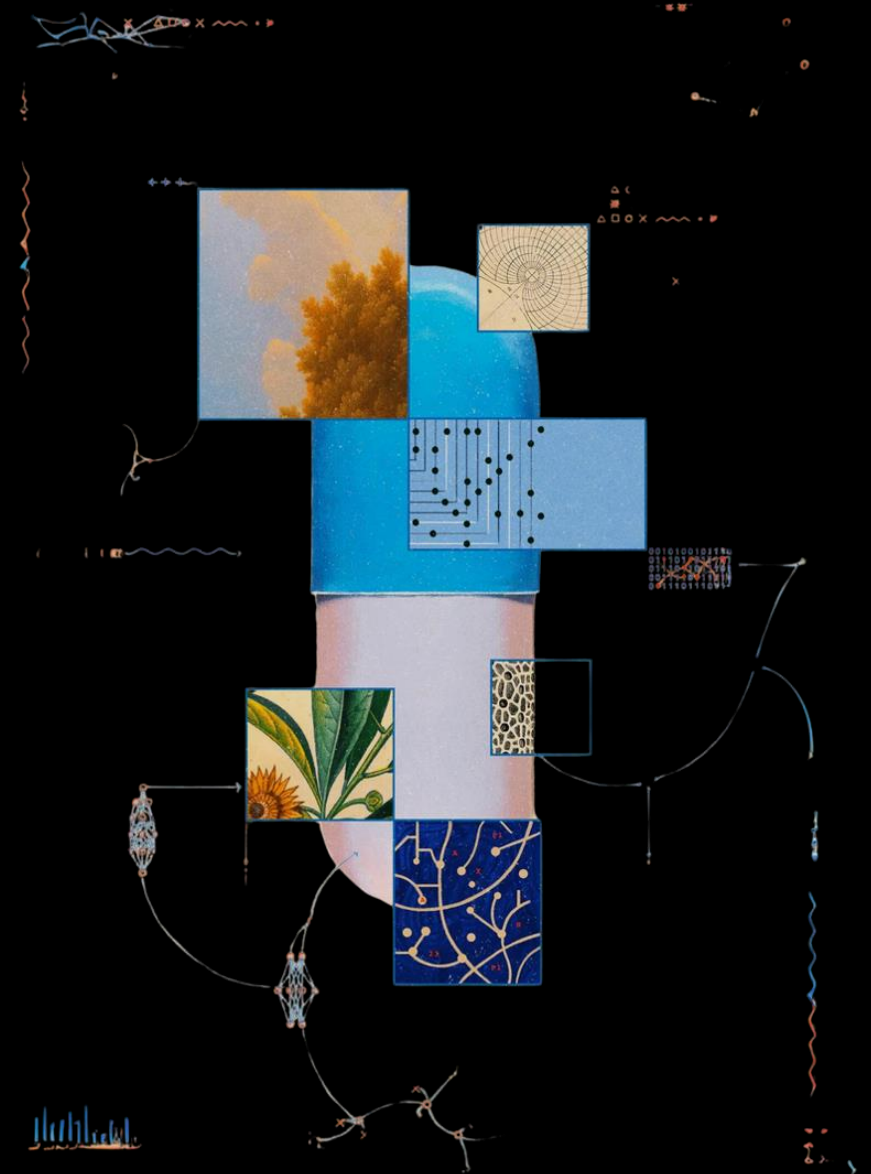
GyaniMed™

A generative AI for scientists workspace

By Intelligence 

"Creating a universally **accessible** AI workspace for drug development, **breaking** down barriers to accelerate **knowledge** transfer and foster **sustainability** in medicine manufacturing."

Dr Swapnil Khadke, London



Team



Swapnil
Khadke, PhD

CEO

TechBio R&D leader
Drug delivery innovator,
CMC expert.



Neil
Robertson

CTO

Lead Software Engineer
Full-Stack / Python
developer. AI/LLM innovator.



Dennis Christensen,
PhD

Scientific Advisor

Head of R&D, Croda
Vaccine formulation leader,
18-year immunology and
adjuvant expert.



Chris
Rushworth

Product Advisor

Product Strategy & Client
Executive
Digital transformation leader,
healthcare expert.



Priya
Kalia, PhD

Communications Advisor

20-year strategic comms
leader, science, tech,
environment expert.



The problem

“The pharmaceutical analytics market is projected to grow to \$102 billion by 2030, yet **most solutions fail to integrate production and research data effectively.**”



Expert Opinion:

"Our current **Electronic Lab Notebooks** are **difficult** to customize and inefficient. Even creating a simple database from a CSV file can be challenging due to the complexity of the associated processes."

- User at a CRO, UK

Disconnected Data Systems

Scattered, incompatible tools hinder collaboration, making it difficult to leverage insights across teams

AI Gap in Late-Stage Drug Development

While AI has revolutionized early discovery, mid-to-late-stage development remains siloed, leaving teams overwhelmed by fragmented data.

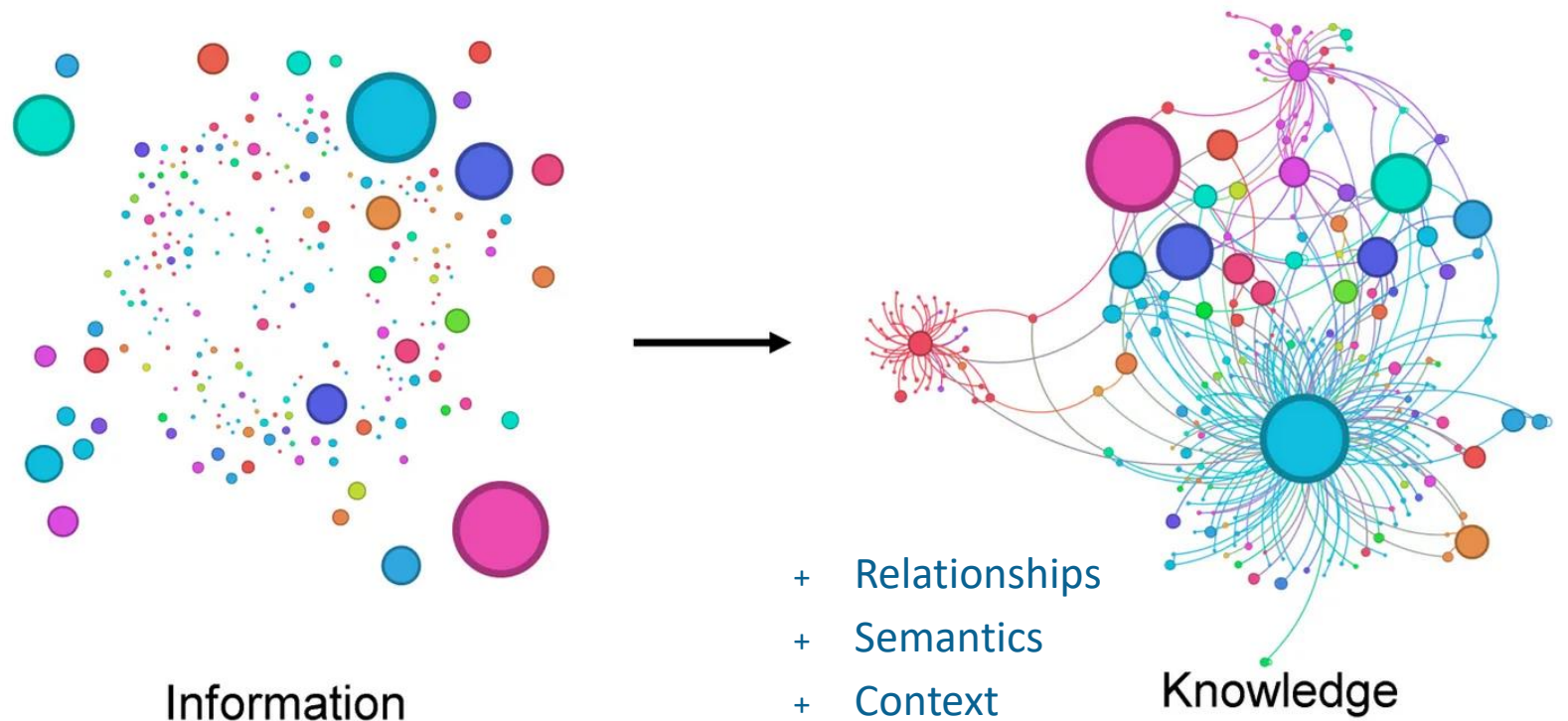
Sustainability Overlooked

Inefficient workflows lead to resource wastage, redundant experiments, and higher carbon footprints, making the industry unsustainable.

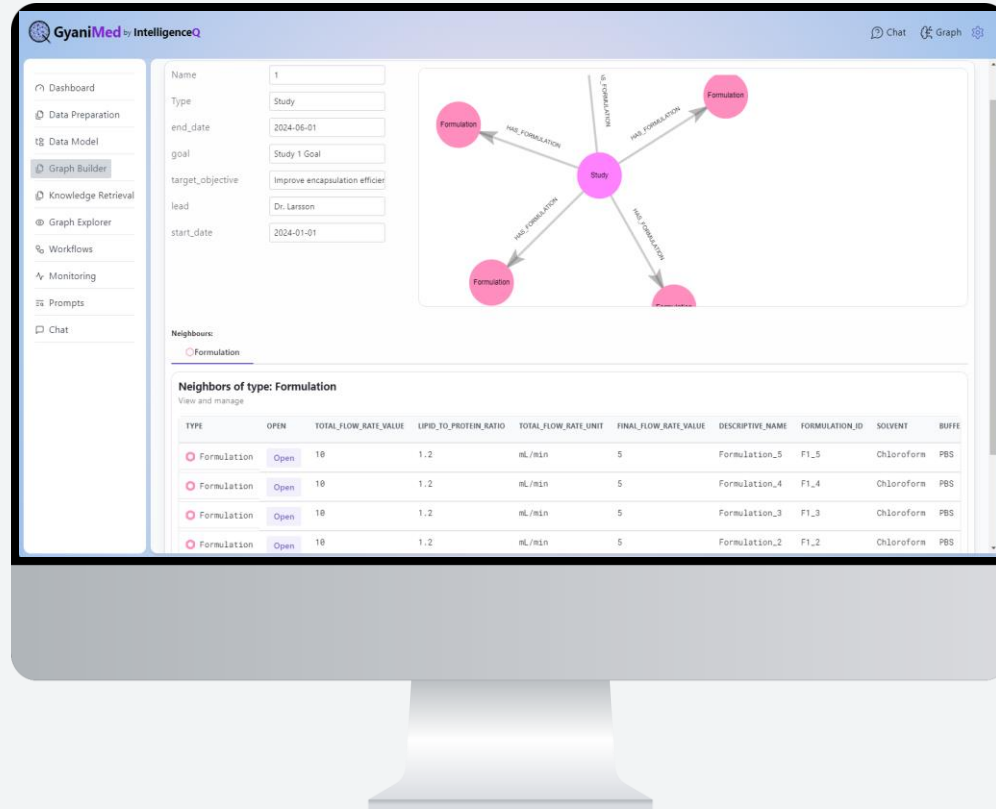
Connections in Data

is essential for digital transformation
is the missing link for intelligence and innovation

Organizations are
drowning in data but
**data is fragmented and
getting insights is harder**



The solution



Transforming manufacturing data into actionable insights to streamline sustainable drug manufacturing

First step is - get your data AI ready!

Features

- **AI-Ready Knowledge Databases:** Automatically transforms messy lab data into a unified, AI-ready format.
- **Integrated Research and Production:** Bridges experimental research with manufacturing for seamless workflows.
- **Synthetic Data Generation:** Produces high-fidelity synthetic data to enhance predictive modelling and support decision-making.
- **Natural Language Interface:** Empowers scientists to query and analyse complex datasets using easy natural language questions.

Benefits

- **Accelerated Decision-Making:** Facilitates data-driven decisions across all stages of drug development.
- **Enhanced Collaboration:** Breaks down data silos, reducing cross-team data retrieval times.
- **Faster Time-to-Market:** Shortens drug development timelines by months, delivering life-saving treatments sooner.
- **Actionable Insights:** Provides tailored recommendations, improving research accuracy and efficiency.

How it works

GyaniMed™ by Intelligence

1. Ingest and Unify Data

Automatically clean, ingest, and structure lab and machine data.

2. Build Knowledge Graphs

Generate AI-ready graphs for seamless insights and workflow integration.

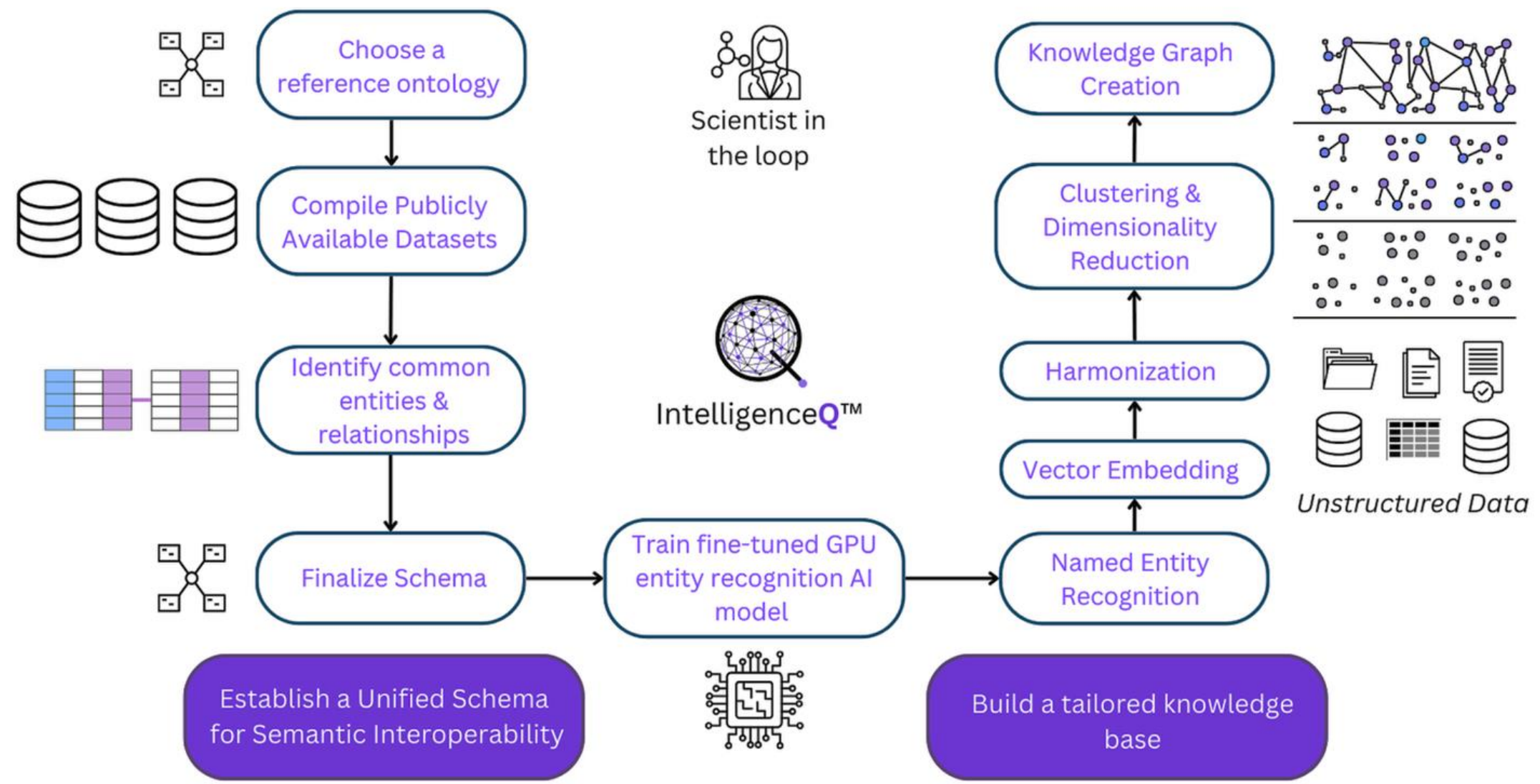
3. Data validation with AI

Enable predictive modelling and actionable insights using natural language interfaces.

Proprietary Pipeline

Knowledge Integration Pipeline

IntelligenceQ™



Traction

Projects



Startup Programmes



Memberships



MVP Developed: Secure Offline AI Workspace for Scientists (Aug 2024)

We have developed a fully offline AI workspace that runs **entirely without internet** on a regular PC, ensuring cybersecurity and data privacy. It integrates locally owned **AI models** and allows users to build and query graph databases using natural language.



Value Proposition Study with CPI (Sept-Dec 2024)

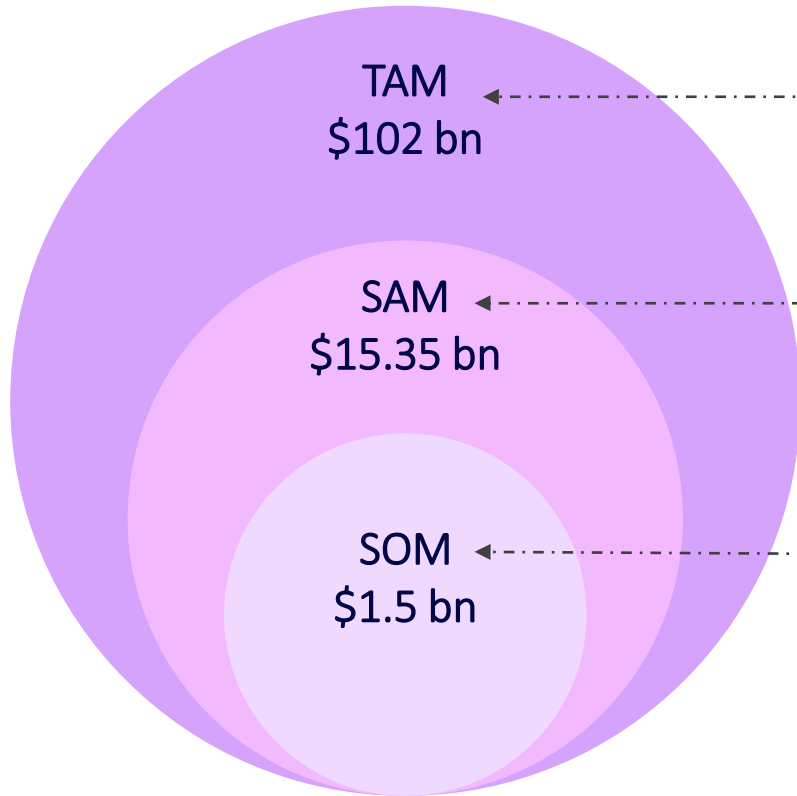
We have partnered with the **Centre for Process Innovation (CPI)** for a proof-of-concept, funded by **Innovate UK Business Growth**. The focus is on validating customer pain-points, data security, scalability, and user experience.



Industry Partnerships (Jan 2025)

We are writing a project with Croda on **Re-purposing of old data to generate new vaccines**, starting in Jan 2025.

Market Analysis



Market Share: \$30 M



\$102 bn

Total Addressable Market (TAM)

Pharmaceutical, biotech, clinical organisations

- Contract Research Organizations (CROs)
- CDMOs
- Universities

Our target users



\$15.3 bn

Service Addressable Market (SAM)

15%



\$15.3 bn

Target Market (10%)

Our current focus is biologicals and high-value medicines.



Market Share

2% adoption rate

Revenue model

Enterprise Partnerships

Large-scale software installations for major clients, with contracts valued at approximately **£50-100k each**. Based on current demand, we are targeting 2-3 contracts annually.

Marketplace Licensing

Subscription-based SaaS model (£50-£650/users/month) on **Snowflake and Google Marketplace**, offering scalable, recurring revenue with unique proprietary AI solutions for medicine manufacturing.

Consortium Collaborations

Leveraging government and **academic partnerships** to co-develop solutions, **funded by grants** that secure ongoing research and public impact projects, driving future opportunities for innovation.



Competition

Company	Focus Area	Key Limitations	IntelligenceQ's Advantage
Benchling	Data Management & Collaboration	Lacks integration beyond data storage, siloed use	Full-cycle data integration for seamless workflows
Dotmatics	Research Data Management	Limited to isolated data tools, no AI-driven insights	End-to-end AI insights for accelerated development
Synthace	R&D Automation and Process Design	Focused on automation, lacks cross-phase optimization	Predictive modeling and holistic optimization
Palantir	Data Integration and Analytics	Generic analytics, not tailored for drug development	AI tailored to drug R&D, reducing time and cost

Investment Overview

Stage: Pre-revenue

Target: Close: Jan 25

Round: Discounted Seed FAST

Raising
£500k

Offering [SEIS/EIS] tax
deductions

SEIS/EIS Advance Assurance
available
(for UK investors only)

£50,000

Minimum investment
amount

Offering standard investor
protections:

Drag along, tag along and
pre-emption rights

We're using [SeedLegals](#) to easily negotiate, sign and store investment documents.

Click here for more details...

https://app.seedlegals.com/pitch/c_XNBza5xGKb/IntelligenceQ

Thank you.

Q & A

Technology Stack



Appendix

GyaniMed

/gja:.nɪ , mɛd/

Gyan

(Sanskrit: ज्ञान) Knowledge; information, understanding, or skill that you get from experience or education.

Med

(short for **Medical**) Pertaining to the science or practice of medicine; relating to the maintenance of health.



Data Model

Define the concepts relating to your research.

Build Data Model →



Graph builder

Import research into the knowledge graph.

Build graph →



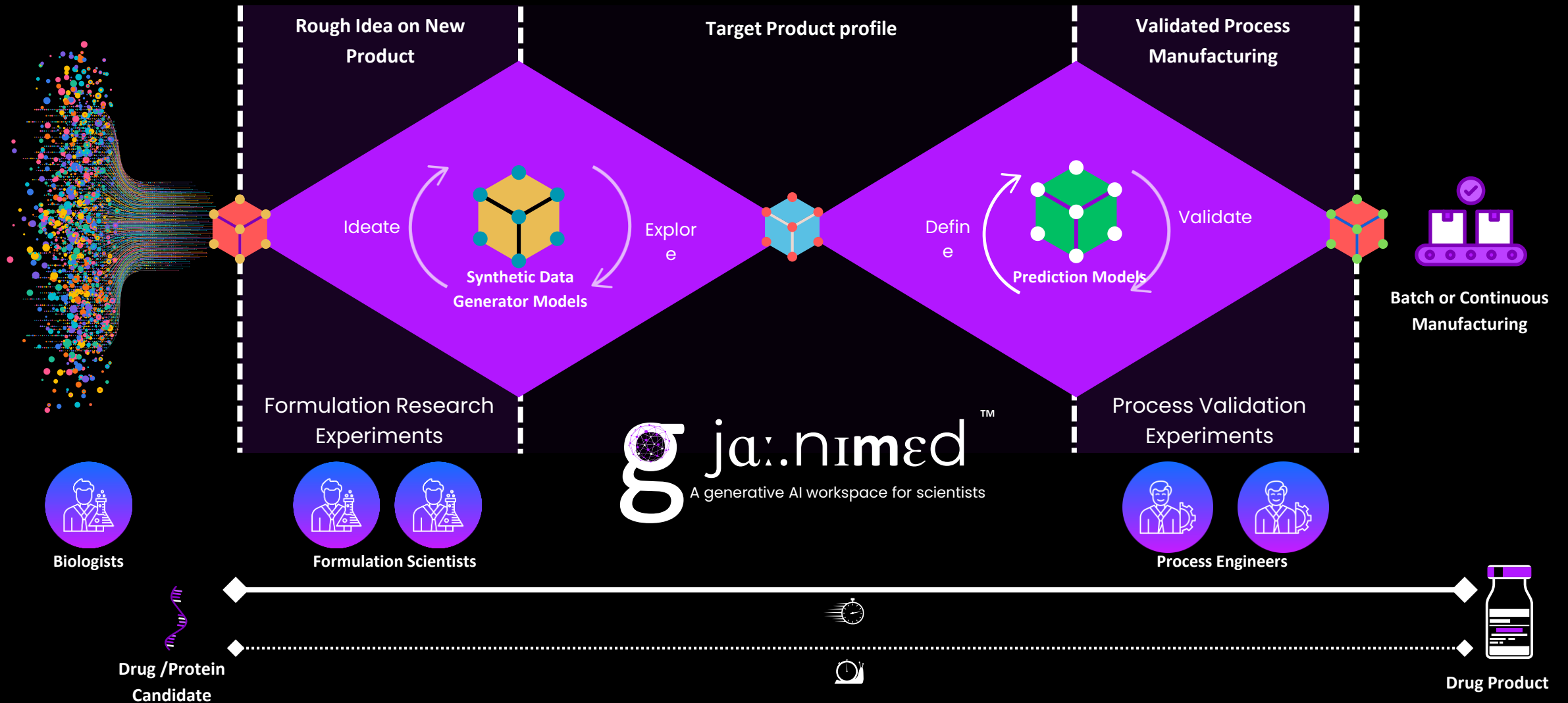
Graph Explorer

Explore the entities and relationships with help from GyaniMed's AI assistant

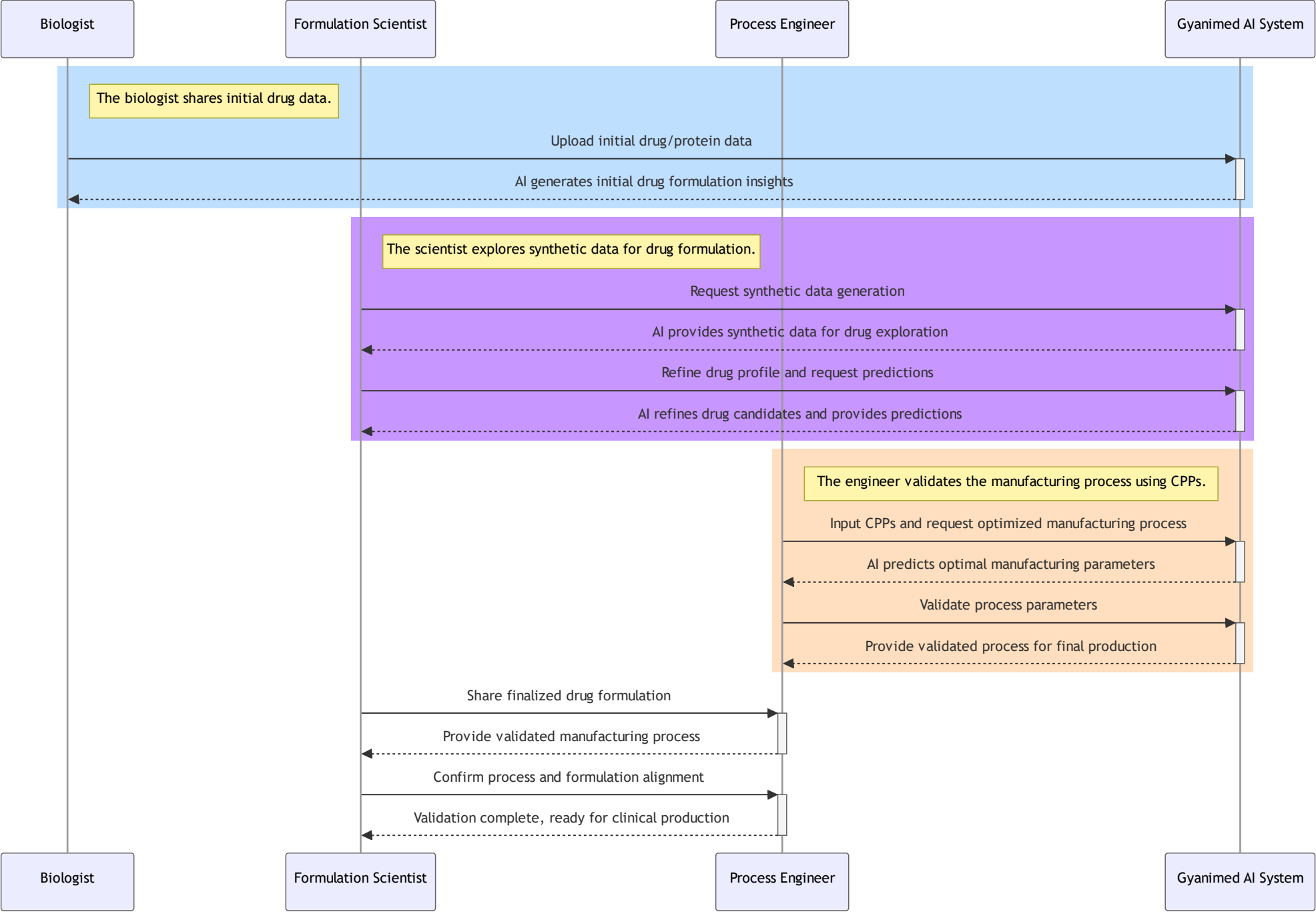
Explore your data →



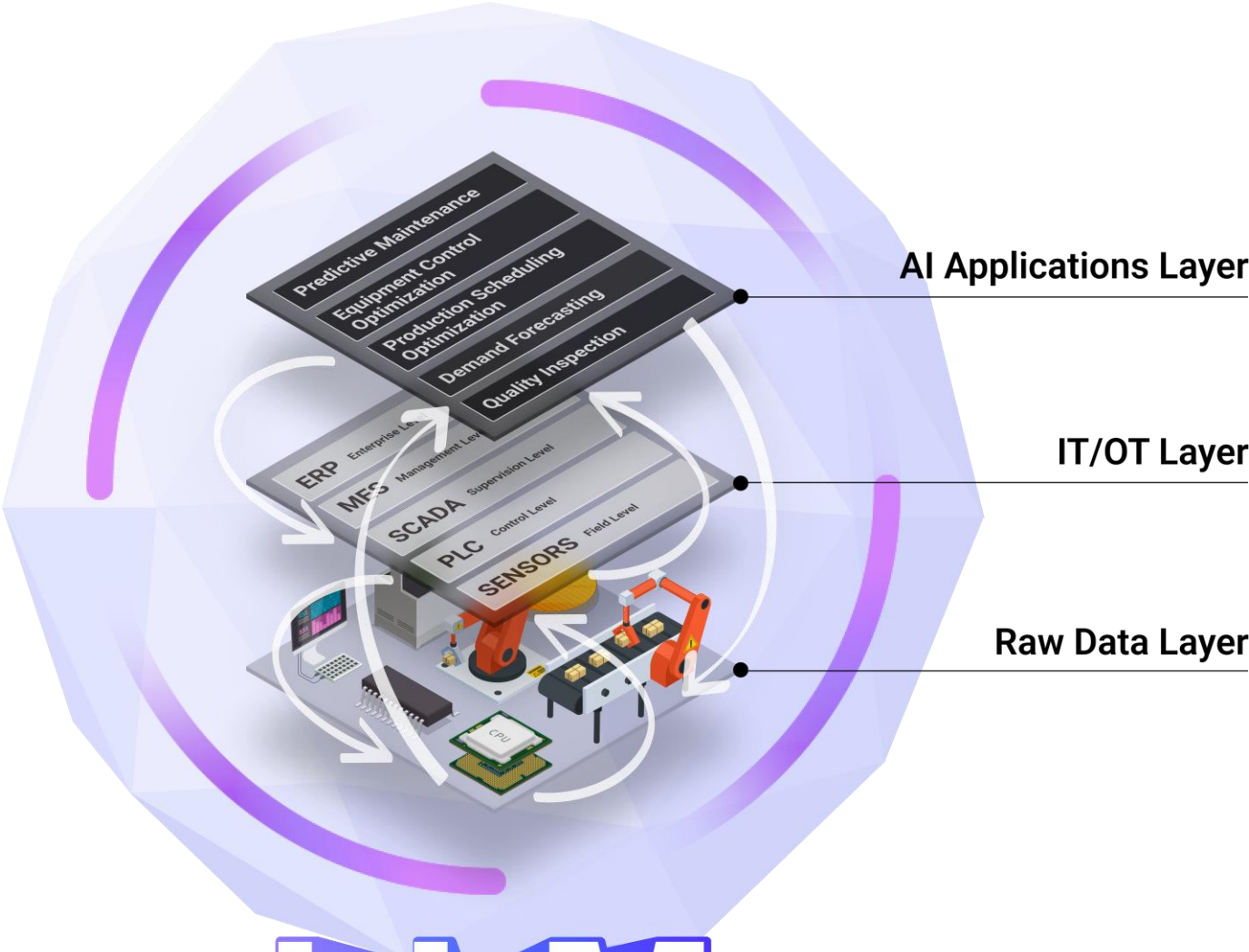
GyaniMed AI: Generative AI workspace for late-stage drug development



User story




Integration Layers



Large Language Model

GyaniMed Recursive AI Agentic Workflow for Data Model Building

 **GyaniMed** by IntelligenceQ

Dashboard

Data Preparation

Schema Builder

Knowledge Retrieval

Graph Explorer

Workflows

Monitoring

Prompts

Chat

Graph

Log out

Schema Workflow - test (0 / 5 passes)

Start Workflow

Total Tasks: 23, Completed Tasks: 0

Pass Results

CHUNK	PASS 1	PASS 2	PASS 3	PASS 4	PASS 5
STATUS					
pharmaceutics Article Rapid Quantification and Validation of Lipid Concentrations within Liposomes Ca ...					
Pharmaceutics 2016 ,8, 29 2 of 11 Mycobacterium tuberculosis . It has two 22 carbon saturated fatty- ...					
Pharmaceutics 2016 ,8, 29 3 of 11 beam illuminates the sample, and when the laser hits the particles ...					
Pharmaceutics 2016 ,8, 29 4 of 11 6,6'-dibehenate (TDB) were obtained					

Cancel

Back

Next

GyaniMed Vision: Analysing scientific plots extracting accurate interpretation

- Dashboard
- Data Preparation
- Schema Builder
- Knowledge Retrieval
- Graph Explorer
- Workflows
- Monitoring
- Prompts

Prepare

Chunks

Text Chu

Page-B

AVAILAB

0510152

0500001

0500001

0500001

0510152

0510152

0510152

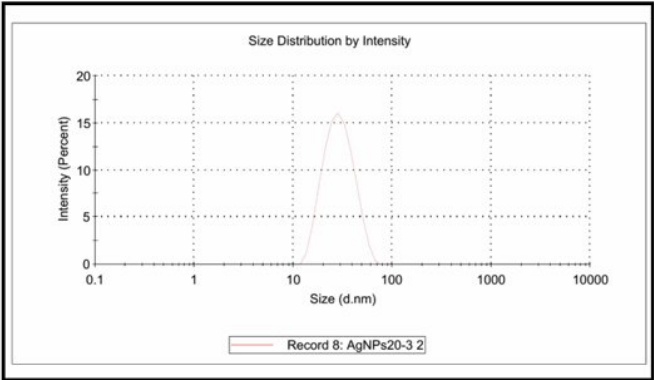
070000010000060000080000100000120000140000160000 -100

Analyze Image

Image analysis workflow



Analyze



Enter the context of the image

The image shows a graph titled "Size Distribution by Intensity." The X-axis represents the size in nanometers (d.nm) and ranges from 0.1 to 10000 nm. The Y-axis indicates intensity as a percentage, ranging from 0% to 20%.

The graph features a red line representing the intensity plotted against size, showing a peak around size 10 nm, indicating the most common size measured in the distribution. There are

```
{"entities": [{"name": "Entity1", "type": "Type1"}, {"name": "Entity2", "type": "Type2"}], "relations": [{"source": "Entity1", "target": "Entity2", "type": "relation"}]}
```

Confirm




Analysis complete

REMOVE



GyaniMed Scientist-in-the-loop for accurate schema generation and to control AI models

 **GyaniMed** by IntelligenceQ

Chat

Graph

Settings

Log out

Dashboard

Data Preparation

Schema Builder

Knowledge Retrieval

Graph Explorer

Workflows

Monitoring

Prompts

Review Schema

You have unsaved changes.

Discard

Entity Types

Lipid [6]

Sequence [2]

Protein [8]

ExtracellularVesicle [3]

MembraneTargetingSequence [2]

LipidRaft [2]

EngineeredTranscriptionFactor [2]

Gene [2]

Cell [2]

Article [4]

Author [2]

Relationship Types

BINDS_TO [0]

TRAFFICS_TO [0]

LOADS [0]

Cancel

Update Schema

Radial

Organic

Circular

Orthogonal

Sequence

Protein

ExtracellularVesicle

Lipid

MembraneTargetingSequence

LipidRaft

Article

Author

EngineeredTranscriptionFactor

Gene

Cell

TRAFFICS_TO

LOADS

CONTAINS

BINDS_TO

ASSOCIATES_WITH

HAS_MEMBRANE_PROPERTIES

TAGGED_WITH

AUTHORED_BY

DELIVERS_TO

EXPRESSED_IN

Private and Confidential. All right Reserved. ©IntelligenceQ 2024

21